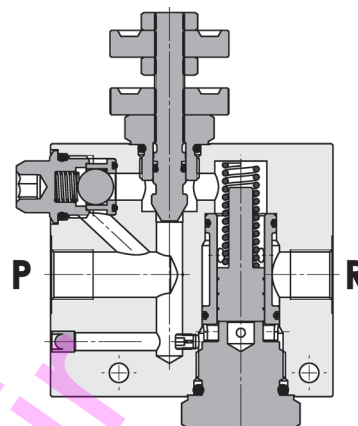
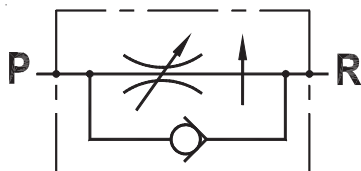


**Regolatore di flusso compensato, con ritorno libero**  
**In line pressure compensated flow regulator, with free reverse flow**

Rev.02-2010/05



**SPECIFICHE TECNICHE**

**Materiali:** corpo in alluminio (standard), a richiesta in acciaio.  
 Componenti interni in acciaio trattato termicamente.

**Portata max.:** - 30 l/min per 3/8";  
 - 50 l/min per 1/2";  
 - 90 l/min per 3/4"

**Pressione max.:** 250 bar (std), 350 bar (S)

**TECHNICAL SPECIFICATIONS**

**Materials:** aluminium body (std), steel body on request. Internal parts are in hardened steel.

**Rated flow:** - 30 l/min for 3/8";  
 - 50 l/min for 1/2";  
 - 90 l/min for 3/4"

**Max. pressure:** 250 bar (std), 350 bar (S)

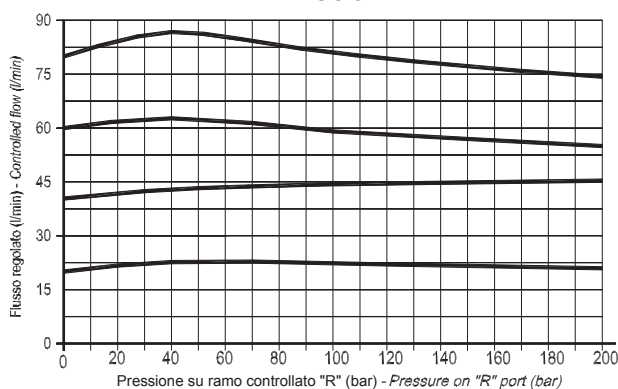
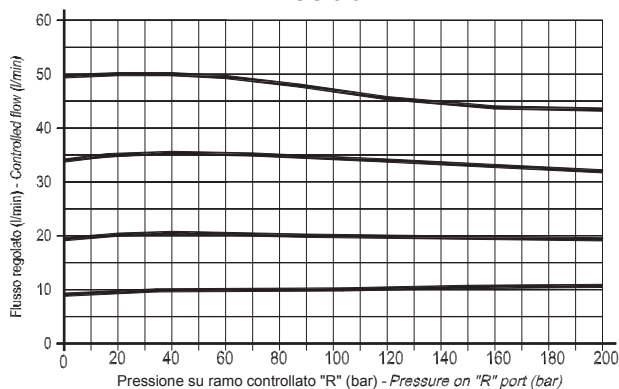
**DIAGRAMMA COMPENSAZIONE - COMPENSATION CURVES**

Viscosità olio 24 mm<sup>2</sup>/sec. (3,5 °E)  
 Temperatura 50 °C

Oil viscosity 24 mm<sup>2</sup>/sec. (3,5 °E)  
 Temperature 50 °C

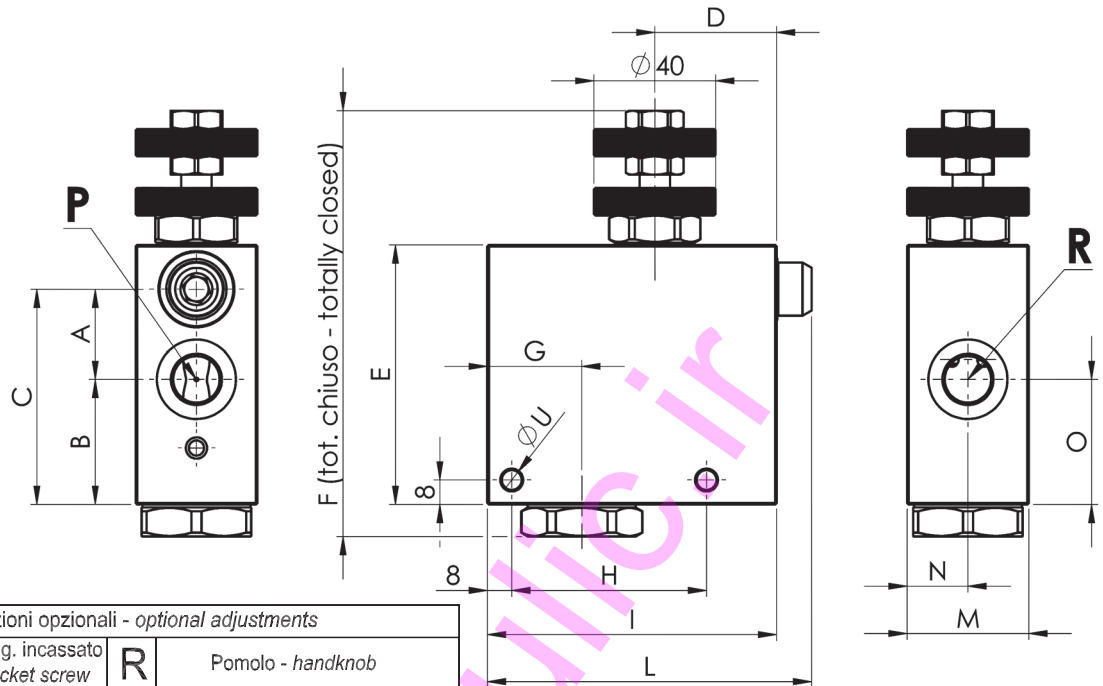
FPRUC 3/8" - 1/2"

FPRUC 3/4"

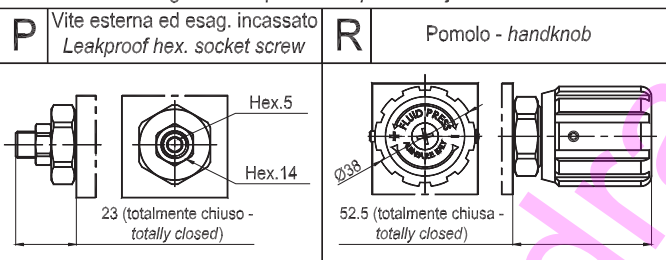


**Regolatore di flusso compensato, con ritorno libero**  
**In line pressure compensated flow regulator, with free reverse flow**

Rev.02-2010/05



Regolazioni opzionali - optional adjustments



TIPO TYPE	PORTATA MAX. MAX. FLOW	A	B	C	D	E	F	G	H	I	L	M	N	O	P	R	U	PESO WEIGHT
	L/MIN	mm	mm	mm	mm	mm	mm	mm	mm	mm	mm	mm	mm	mm	BSPP	BSPP	mm	Kg
FPRUC-3/8	Vedere specifiche See specifications	29.5	42	71.5	40	85	139.5	31	64	95	106.5	40	20	41	3/8"	3/8"	6.5	1.085 - 2.450(S)
FPRUC-1/2		29.5	42	71.5	40	85	139.5	31	64	95	106.5	40	20	41	1/2"	1/2"	6.5	1.085 - 2.450(S)
FPRUC-3/4		38	42	80	52	100	154.5	35	82	120	131.5	50	25	44	3/4"	3/4"	8.5	1.085 - 4.320(S)

**ESEMPIO DI ORDINAZIONE - ORDERING CODE EXAMPLE**

**F P R U C    3 / 8    S    G    \***

- |   |   |
|---|---|
| <p>3/8 - 3/8" BSPP<br/>         * 1/2 - 1/2" BSPP<br/>         3/4 - 3/4" BSPP<br/>         Connessioni - Port sizes</p> <p>* Mat. corpo: omettere se alluminio, S=acciaio<br/>         Body material: omit if aluminium, S=steel</p> | <p>Guarnizioni - Seals:<br/>         V=Viton *<br/>         Omettere se BUNA-N - Omit if BUNA-N</p> <p>G: ghiera - ring<br/>         P: vite con esag. incassato - leakproof hex. socket screw *<br/>         R: pomolo - handknob<br/>         Regolazioni - Adjustments</p> |
|---|---|